

hcb



ANNUAL REPORT
STATEMENT OF ACCOUNTS
& DIRECTORY

1988 — 1989

GREATER GLASGOW
HEALTH BOARD





I welcome this opportunity to speak to those who work in the Greater Glasgow Health Board. I wish to say thank you to all members of staff for their constant devoted service which is ultimately for the care of patients, to all officers of the Board who work extremely hard and not least to our Board members who actively participate not only in committee meetings but also on advisory appointment committees, appeals and as our representatives on many organisations outwith the Board.

The visits of Board members to the Units continue at regular intervals. These allow for improved communication between the members and staff in the Units and ensure that the members can see for themselves what is happening "on the ground". My thanks are due to all those who plan the local arrangements which made these visits so successful.

Since my appointment as Chairman I have encouraged all methods which could improve communications within our Board. I therefore, warmly welcomed the publication of "The Bulletin" and I would invite all members of staff to use this as a vehicle for exchange of ideas and distribution of news. Congratulations to Miss Hilary Robertson on her editorial skills.

The end of March brought changes in the composition of our Board and I wish to thank most warmly those members who retired at that time for the devoted service they gave so willingly, some for many years, to promote the work of the Board. They are Mr John Jackson, Professor Arthur C. Kennedy, Reverend John Lang, Dr John Mackay, Mr Len Turpie and Mr Colin Williams. Professor A.T. Florence also left the Board on his appointment as Dean of the School of Pharmacy in London in January. We wish him well. At the same time, it is with great pleasure that I welcome our new members; Rev Roderick M. Campbell, Dr W. Keith Davidson, Mr Colin MacKay, Mr W. Macreath and Mr Norman M. Naftalin and Mr Laurence Peterken our Board General Manager.

We said farewell to Miss Elizabeth Meikle, Chief Administrative Pharmaceutical Officer, who retired on 28 February after nearly 40 years in the National Health Service. We all wish her a healthy and happy retirement.

We were delighted to learn of awards in the Queen's Honours Lists to Miss Heather Gordon MBE, Dr Dan Reid OBE, Dr J.A. Riddell OBE and Professor W.S. Foulds CBE.

In November, Sir Alistair Currie, Honorary Treasurer of the Cancer Research Campaign, performed the official opening of the new Beatson Oncology Centre at the Western Infirmary.

January saw us on the move from Bath Street headquarters to temporary accommodation in the Royal Beatson Memorial Hospital. The "operation exit" has been accomplished with goodwill, often humour and much hard work and I would thank all members of staff for their tolerance during that time.

In March we had the pleasure of a two day visit by the Chairmen of Scottish Health Boards and the Common Services Agency, to Glasgow. I was delighted to be able to take them to several of our centres of excellence where they saw the work being done there and met members of staff. I have the honour now of having been elected as Chairman of this Chairmen's Group.

In this same month at an informal reception at Stobhill Hospital, I had the privilege of saying thank you, on behalf of the Board and all of us, to a group of radiographers from the whole of Glasgow who had responded to a request for volunteers to give of their expertise in Lockerbie on the 1st to 3rd of January. The spirit of selfless service still abounds.

The 1989/90 financial year has also started briskly. Everbody was delighted that HRH The Princess of Wales was able formally to open the new Parkhead Psychiatric Hospital despite a busy schedule. Parkhead is the first Psychiatric Hospital to have been built in Scotland for almost 100 years and it was a considerable honour that HRH found time to tour the Hospital and unveil a commemorative plaque.

I am pleased to announce the establishment of a Patient Services Department which will work to improve the quality of service to patients throughout the GGHB area. Already efforts by this Department have reduced waiting times and a new prototype Outpatients' Department will be introduced at Gartnavel General Hospital.

I should also like to welcome the appointment of Professor D.K. Mason, Dean of Dental Education at Glasgow Dental School, as President Elect of the General Dental Council and to wish him well during the coming years.

The next twelve months will bring the time for major and far reaching decisions to be taken by the Board on our strategic reviews of services for our patients and on the implementation of the Government's White Paper "Working for Patients". Let us all address these challenges with vision and courage, our guiding premise being the needs of the people whom we serve.

A handwritten signature in blue ink that reads "Thomas J. Thomson". The signature is written in a cursive style and is underlined with a blue line.

THOMAS J. THOMSON, Chairman

MEMBERS OF THE BOARD



CHAIRMAN
Dr Thomas J Thomson
CBE LLD FRCP FACP



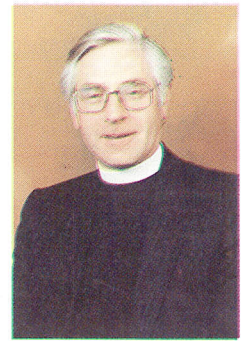
VICE-CHAIRMAN
Mr Paul W Holst



GENERAL MANAGER
Mr L.E. Peterken MA



Provost JE Cameron JP



Rev. R.D.M. Campbell
BD FSAScot



Dr WK Davidson
CBE JP FRCGP



Miss E Donachie
RGN SCM



Mr AD Garland
FRICS JP



Mrs A Gilchrist



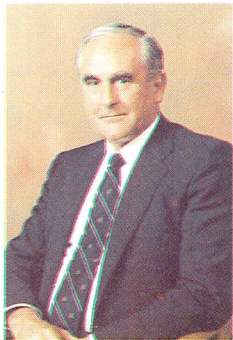
Lady Goold
BL CA



Mrs A Jarvis



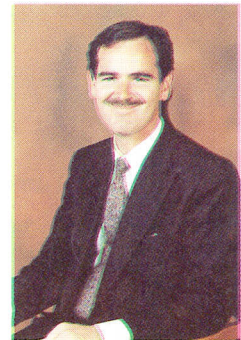
Mr BA Maan
JP DL



Mr AJ Mack MB ChB
MSC FRCS (Edin, Glas)



Professor RM Mackie
MD FRCP FRCPath FRSE



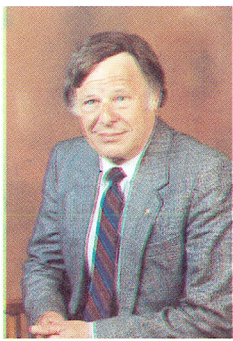
Mr W Macreath
LLB NP SSC



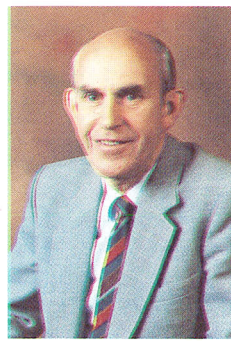
Mr C MacKay
BSc MB ChB FRCS
(Eng, Edin, Glas)



Mrs M McGarry
MA JP



Mr NM Naftalin BL NP



Mr JA Peel
FIMLS



1. OVERVIEW

The Board has again strengthened its financial position and as a result has been able to make substantial improvements to the service. New revenue developments totalled £4.759 million. Substantial sums of extra money went into Mental Handi-

cap and Mental Illness, two of the major priority areas set out in the Scottish Health Authorities Revised Priorities for the Eighties and Nineties (SHARPEN). Capital expenditure jumped by 46% to nearly £25 million. In particular a large capital investment programme has been undertaken at Lennox Castle Hospital.

The Board published the first of its acute speciality strategies - on Renal Services - and was able at once to allocate £1.2 million to remedy the shortfall identified. The £5.6 million expenditure on medical equipment was the highest ever level achieved and the Board continued to employ a record number of nurses. An additional ward was permanently opened at Yorkhill Children's Hospital. Waiting times have been reduced in many specialities.

2. RESULTS FOR THE YEAR 1988/89

Cash Out-turn

The Board's cash limited allocations for Hospital and Community Services and for Capital and Estate Maintenance Programmes were un-

derspent by £4.577 million on a cash basis. This out-turn will allow the Board to carry forward as last year the 1% maximum into the new financial year as a contingency provision.

Revenue Expenditure

Expenditure on Hospital and Community Services in 1988/89 increased by £46.1 million or 11.3% over the previous financial year. This overall change reflects the impact of pay and price increases, additional funding of £3.16 million for Central Initiatives on waiting lists, AIDS and breast screening and £3.12 million for the transfer of responsibility to the Board from the Scottish Home and Health Department for payment of services provided to the disabled.

Fresh monies have continued to be found through our efficiency programme and through competitive tendering. Their reinvestment in direct care services shows up strongly in the increase of 12.5% in Hospital Services and 16.5% in Community Services.

Hospitals	1987 88 £m	1988 89 £m	Change %
Direct Treatment	211.3	237.7	+12.5
Support Services (excluding equipment)	111.9	111.3	(- 0.5)
Community			
Direct Patient Care	23.0	26.8	+16.5
Overhead, Accommodation etc.	7.4	7.6	+2.7

3. Capital Account

Total capital investment shows a substantial 46% increase from £16.97 million in 1987/88 to £24.78 million in 1988/89. This reflects the Board's commitment to the provision of new and upgraded hospitals and wards and the implementation of the programme to improve the Board's estate. The sum of £4.0 million was transferred from revenue to capital to boost this programme. The investment plan for 1989/90 is for a total capital spend of £33.8 million, another big increase of 36%.

	1987 88 £m	1988 89 £m	Planned 1989 90
Capital Programme	10.94	14.16	21.55
Estate Maintenance Programme	6.03	10.62	12.26
TOTAL CAPITAL ACCOUNT	16.97	24.78	33.81